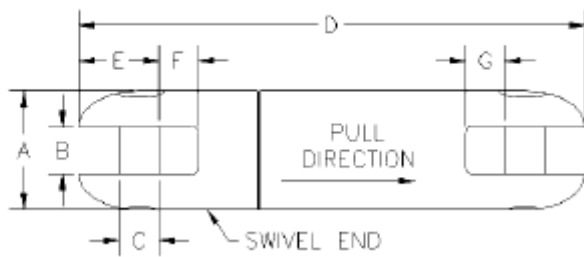
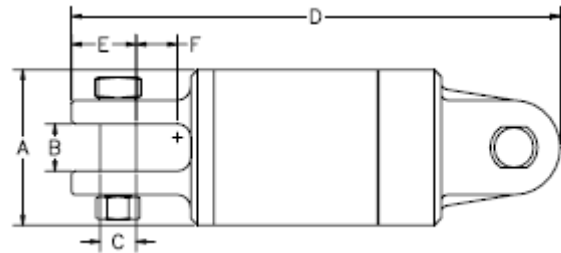




## DUB-LITE Swivel® Clevis x Clevis



Dimension Drawing for:  
 3-00503-204, 205, 208, 210, 215



Dimension Drawing for:  
 3-00503-220, 230, 245

### DUB-LITE Swivels® - Clevis x Clevis

Safe Working Limit	Ultimate Load	A	B	C	D	E	F	G	Net Weight	Part No.
8,500 lbs.	25,500 lbs.	2"	3/4"	11/16"	8 3/4"	1 3/8"	5/8"	3/4"	5.0 lbs.	3-00503-204
10,000 lbs.	30,000 lbs.	2 1/4"	7/8"	3/4"	9 5/8"	1 1/2"	3/4"	7/8"	7.0 lbs.	3-00503-205
15,000 lbs.	45,000 lbs.	2 1/2"	1"	7/8"	11 1/4"	1 3/4"	7/8"	1"	10 lbs.	3-00503-208
20,000 lbs.	60,000 lbs.	2 1/2"	1"	7/8"	11 7/8"	1 3/4"	7/8"	1"	11 lbs.	3-00503-210
30,000 lbs.	90,000 lbs.	3"	1 5/16"	1 1/8"	14"	2 1/4"	1 1/8"	1 1/4"	18 lbs.	3-00503-215
40,000 lbs.	120,000 lbs.	4 3/4"	1 3/4"	1 1/8"	16 1/2"	2 1/16"	1 7/16"	-	49 lbs.	3-00503-220
60,000 lbs.	180,000 lbs.	5 3/4"	1 3/4"	1 3/8"	18 1/4"	2 1/2"	1 7/16"	-	78 lbs.	3-00503-230
90,000 lbs.	270,000 lbs.	6"	1 3/4"	1 3/8"	19 3/8"	2 1/2"	1 7/16"	-	89 lbs.	3-00503-245